

F19.ucl None (C:\700) tds 27

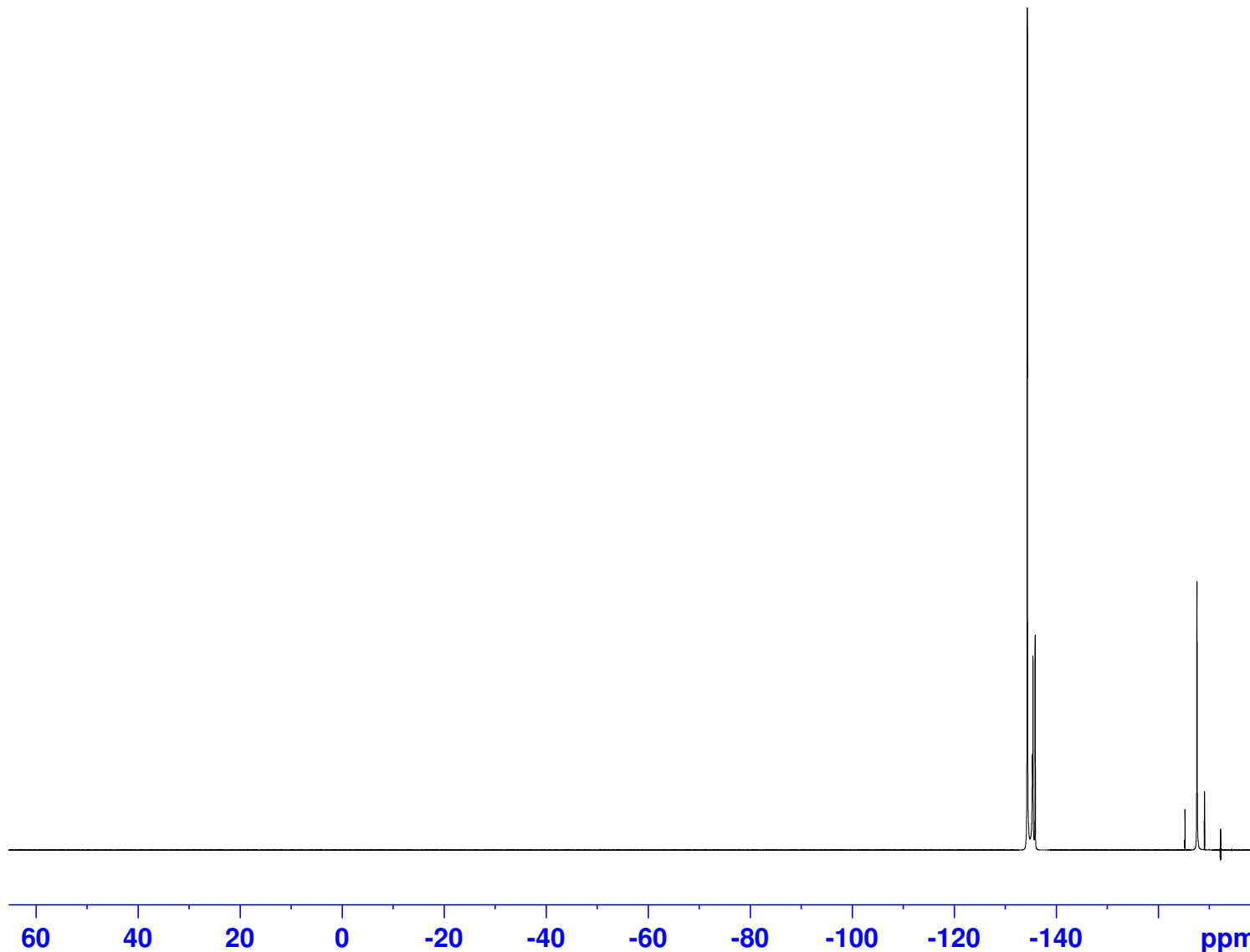
-133.80
-133.91
-134.30
-134.33
-134.35
-134.38
-134.9
-134.9
-134.96
-134.97
-135.41
-135.46
-135.47
-135.48
-135.50
-135.51
-135.52
-135.53
-135.55
-135.7
-135.76
-135.9
-136.19
-136.27
-165.25
-165.26
-165.27
-165.28
-165.29
-165.30
-165.31
-165.32
-165.33
-167.13
-167.17
-167.19
-167.22
-167.24
-167.64
-168.17
-168.28
-168.36
-168.38
-168.43
-168.44
-168.51
-168.52
-168.58
-168.58
-168.61
-169.06
-169.07
-169.08
-169.10
-169.10
-169.11
-169.13
-169.14
-169.15
-169.17
-170.02
-172.11
-172.27
-172.42
-174.46



Current Data Parameters
NAME RP482 tBuOAc
EXPNO 12
PROCNO 1

F2 - Acquisition Parameters
Date_ 20250108
Time 22.38 h
INSTRUM AVNEO700
PROBHD Z154039_0001 (
PULPROG zg30
TD 262144
SOLVENT None
NS 16
DS 4
SWH 161290.328 Hz
FIDRES 1.230548 Hz
AQ 0.8126464 sec
RG 58.6806
DW 3.100 usec
DE 18.00 usec
TE 298.0 K
D1 5.00000000 sec
TD0 1
SFO1 658.9498438 MHz
NUC1 19F
P0 7.17 usec
P1 21.50 usec
PLW1 12.58899975 W

F2 - Processing parameters
SI 262144
SF 658.9874060 MHz
WDW EM
SSB 0
LB 0.30 Hz
GB 0
PC 1.00



0.01
0.18
0.02
9.77
0.02
0.00